



WareHUB

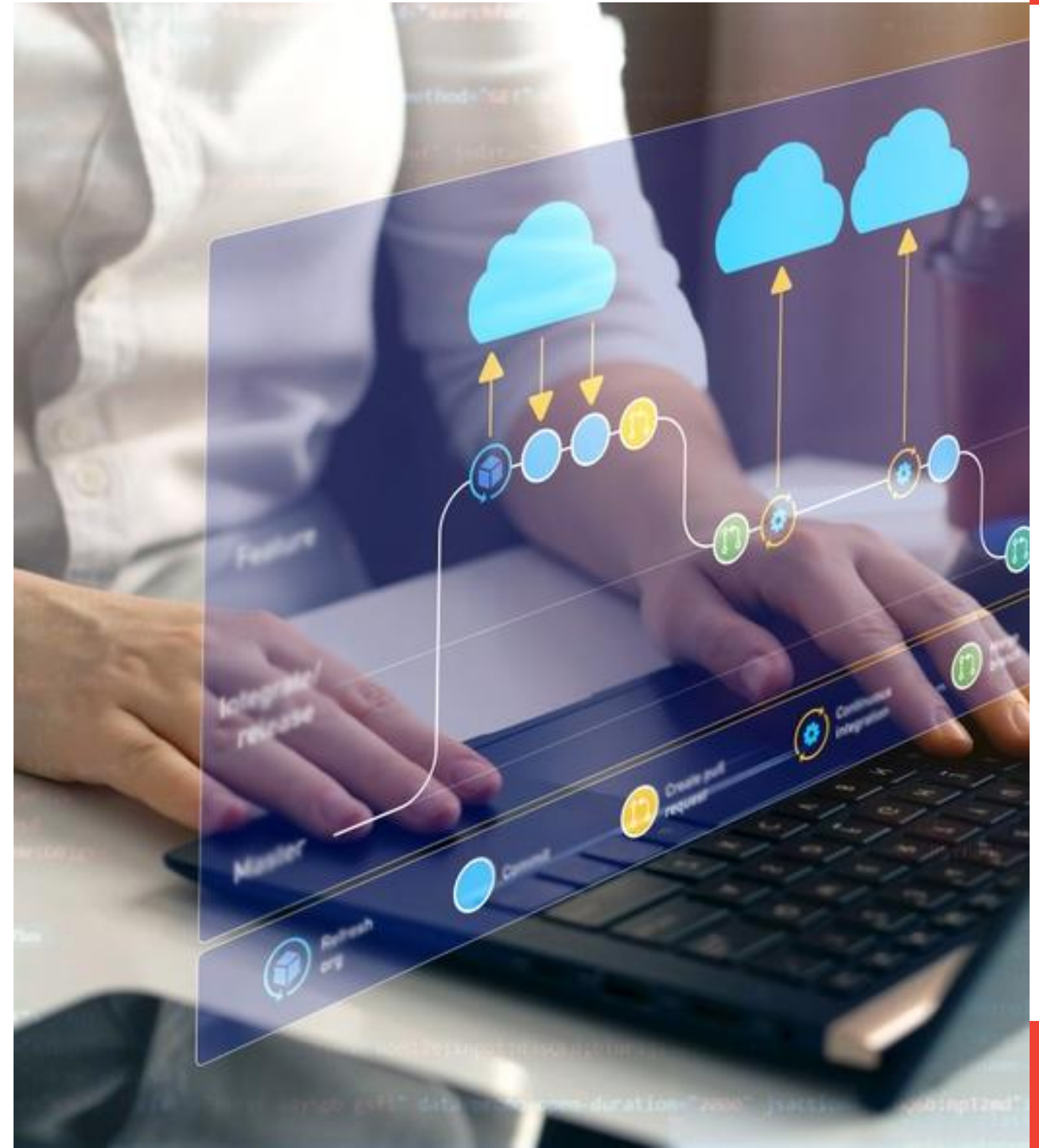
VISIBILITY. EFFICIENCY. CONTROL

Master Data Management

- Product catalog (SKU, barcode, variants, dimensions, weight)
- Category & brand management
- Unit of measure (UOM) management
- Supplier management
- Warehouse & location setup (zones, racks, bins)
- User roles & permissions
- Barcode/QR code configuration

Replenishment Planning

- Minimum/maximum stock levels
- Reorder point management
- Auto-purchase order request generation
- Stock aging analysis
- Seasonal trend analysis





Procurement Management

- Purchase request (PR)
- Purchase order (PO) creation
- Supplier quotations comparison
- PO approval workflow
- Expected delivery tracking
- Stock on hand (SOH)
- Cost tracking

Inbound / Receiving Management

- Goods receipt voucher (GRV)
- Barcode scanning during receiving
- Quality & quantity inspection
- Batch tracking
- Damaged goods logging





Storage Assignment Management

- Automated bin allocation
- Zone-based storage

Inventory Management (Core Module)

- Real-time stock visibility (Actual vs Theoretical)
- Multi-warehouse stock view
- Batch/lot management
- Serial number tracking
- Expiry date tracking
- Production
- Component management (Recipe)
- Stock adjustments
- Safety stock monitoring

Sales Order Processing

- Sales order invoice
- Order status tracking
- Order allocation
- Backorder management

Transfers

- Inter-warehouse transfers
- Transfer request
- Store replenishment

Pick & Pack Management

- Pick list generation with batch, and zone picking
- Barcode scanning with mobile device support
- Packing verification and weight validation
- Label printing and document generation (invoices & packing slips)



Returns Management (Claims)

- Return Merchandise Authorization (RMA)
- Return inspection
- Restocking or disposal decision
- Refund/credit processing
- Damaged goods tracking

Stock Auditing & Cycle Counting

- Recurring stock counting
- Full stock-take audits
- Discrepancy reporting
- Adjustment approvals
- Blind counting
- Audit trail logs





Mobile Application

- Purchase order (PO)
- Receiving
- Stock on hand (SOH)
- Approvals
- Analytics & statistics

Reporting & Analytics

- Inventory turnover rate
- Stock aging report
- Trade analysis
- Slow moving report
- Fill rate report
- Order fulfillment rate
- Warehouse productivity metrics

Extra interfaces

- ERP integration
- CRM integration
- Accounting software integration
- HR & Payroll integration
- Fleet management integration
- eCommerce integration
- POS integration
- API access

Security & Administration

- Role-based permission
- Multi-location access control
- User activity tracking
- Backup & restore
- Multi-language support





**THANK
YOU**

www.hubiteg.com